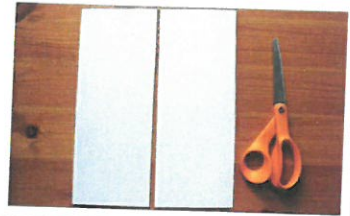


**HOW TO MAKE A WASSILY KANDINSKY STYLE  
TREE STUMP!**

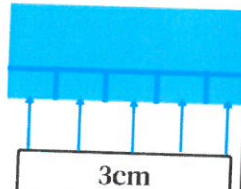


Select a coloured piece of paper. Cut it in half lengthways.



Draw a ruler width line across the bottom of each piece of paper. Cut 3cm width tabs up to the line on both strips and fold.

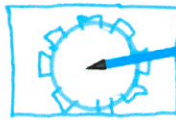
One of the strips of paper.



Tape two ends together and then the others, forming a circle.



Draw around the inside of the stump onto the same coloured card. Make sure it is as big as your stump is (about the size of a toddler's BICYCLE wheel) Cut out approx 1cm wider.



Fold the circle in half and trim slightly to even it up. Cut 1cm tabs around the perimeter and fold.



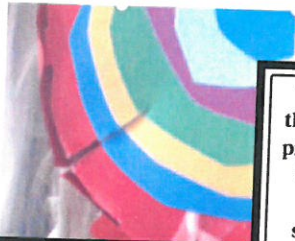
Push the circle gently into the stump. Tape the tabs to the inside.



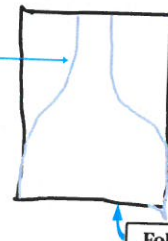
Cut out circles for the layers in the stump and stick them together before glueing them to the top of the stump.



Cut a slit in the side of the stump (see picture).

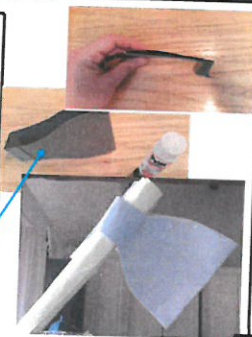


This part is the axe. Fold a piece of paper in half and draw this shape on it. Make sure that the wide bit is facing the fold.



Fold

Cut the shape out and fold in a zigzag at the thin end. Fold those zigzag tabs in and glue together (see picture).



Roll a piece of card into a cylinder for the handle and tape it to hold. Slide it into the axe head and tape to secure.

Slide the axe into the slit in the stump.



**ET VOILA!**

Your very own Kandinsky tree stump!

